

Working with the Land to Produce Beef



Todd, Loretta & Kirby Swickard

Swickard Family History



Family History

- 1852 – New Orleans
→ Cape Horn → Santa Clara Valley
- Horse Operation to Supply San Francisco with Transportation
- Started building a cattle herd



“I don’t plan to make a million, but to build up a good foundation herd and develop something of a name, and this takes time.”

-1949 – Jack Swickard, 1931-2001





Swickard Ranch – San Jose 1957

Five Dot Ranch -Susanville 2011





OUR CHALLENGE

“Planned grazing management is a way of working with nature and not against it. Working with nature means looking after the ecosystem processes, which are solar energy, water, soil minerals and biodiversity. Improved ecosystem health and higher productivity are the results. Production is often increased as much as 70 percent without fertilization or seeding, just by managing better.

An acre of land is a 43,560 square-foot solar panel that converts sunlight into plant tissue. How good is your solar panel? The solar panel is most efficient when the soil surface is covered with healthy, vigorous plant life. Having bare soil wastes solar energy. A soil surface covered by healthy plants does the best job of catching and retaining precipitation.”

- Jim Gerrish, grazing management educator & consultant

quoted by Doug Warnock, Capital Press 2012



Working With The Environment



Lassen National Forest



← 2011



1992 →

11 12 '92



← 2011

1992 →





← 2011



1992 →





← 2011



1992 →



← 2011



1992 →



← 2011



1992 →



Stone Ranch -Eagle Lake, CA



Long Valley Creek



← 2000

1986 →





← 2000

1986 →



Long Valley Creek - 2010



Long Valley Creek - 2010



Willow Creek



←2012



1992 →





← 2012

1992 →





←2012

1992 →





←2012

1992 →

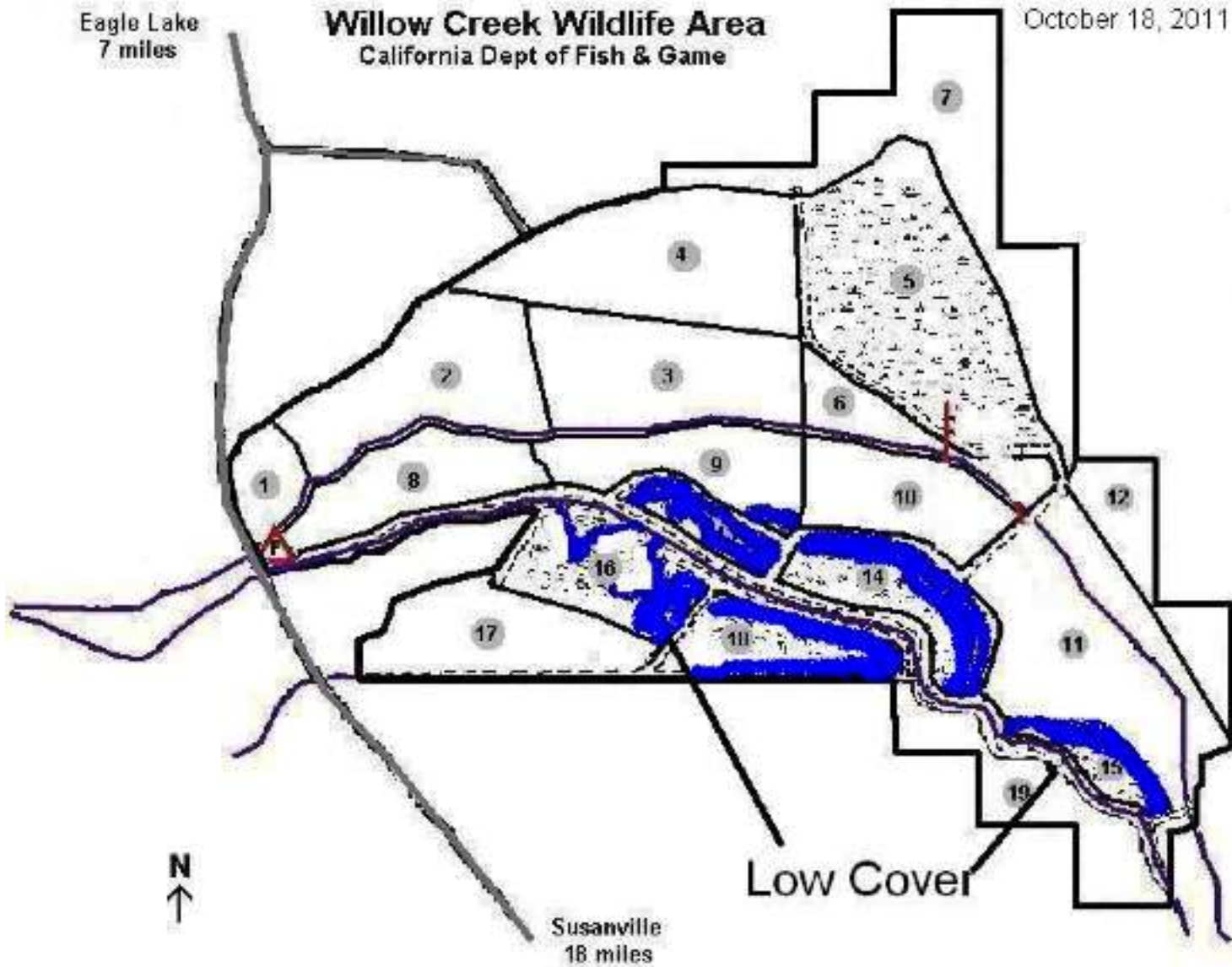


Eagle Lake
7 miles

Willow Creek Wildlife Area

California Dept of Fish & Game

October 18, 2011



N
↑

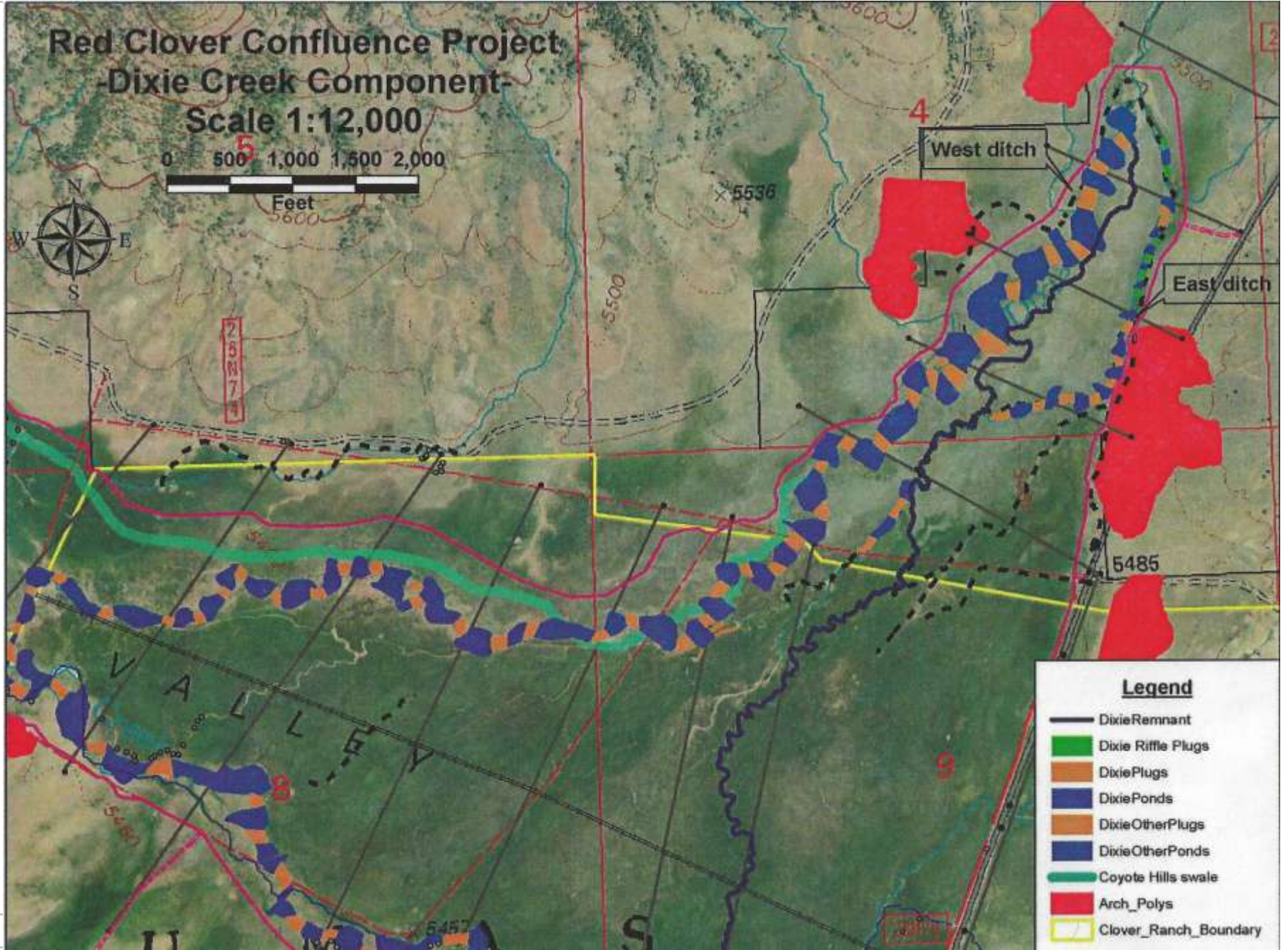
Susanville
18 miles

Low Cover

Red Clover Confluence Project -Dixie Creek Component- Scale 1:12,000

0 500 1,000 1,500 2,000

Feet



Legend

- DixieRemnant
- Dixie Riffle Plugs
- DixiePlugs
- DixiePonds
- DixieOtherPlugs
- DixieOtherPonds
- Coyote Hills swale
- Arch_Polys
- Clover_Ranch_Boundary

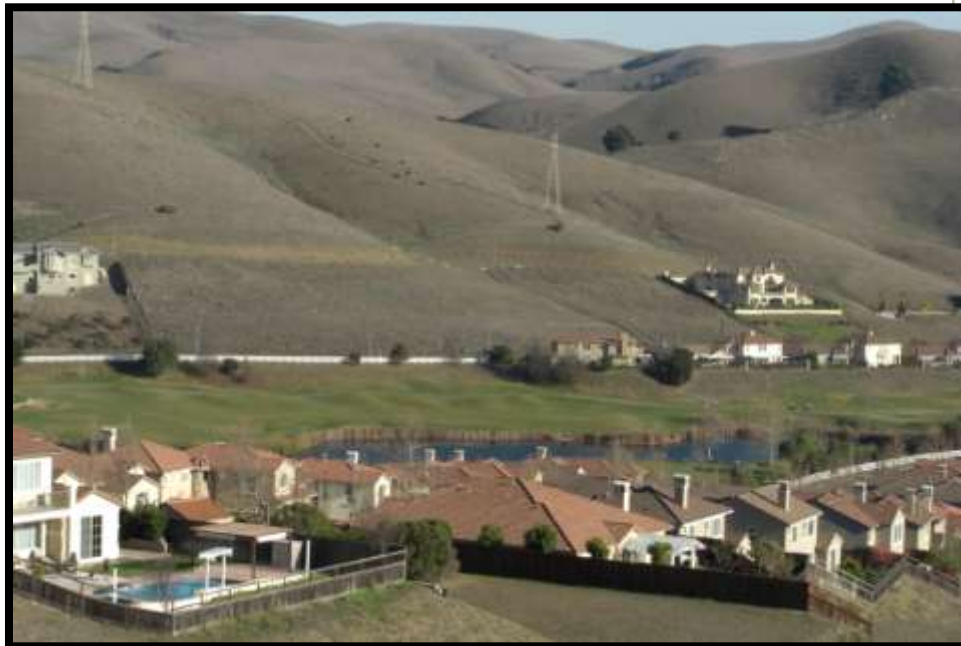
Lake Davis Plumas National Forest



Urban Interface







Great Grey Owl

Tiger Salamander

Sage Grouse

Eagle Lake Trout

Red-Legged Frog

Sandhill Crane

Carson Wandering Skipper

Yellow-Legged Frog

Mule Deer

Waterfowl

Goldfield Wildflower

Prong-horn Antelope

Osprey

Willow Fly Cather

Bald Eagle



Do you know where your
BEEF comes from?

You should.

California ranching since 1852.

We are sustainable.

Our cattle graze looking at
the Golden Gate Bridge.

We are local.

One owner, antibiotic & hormone free.

We are FIVE DOT RANCH.



707-224-5550

www.fivedotranch.com

Oxbow Market Place

610 First St. Napa, CA

Locally Grown, Sustainably Raised



Farmers Markets → Wholesale → Restaurants & Markets → Specialty Retail

Oxbow Public Market

Napa, CA











The Greystone Experience







A large American flag is the central focus, waving in the wind. It is set against a backdrop of a vast, green field with a wooden fence in the distance. The sky is a clear, light blue. The overall scene is bright and open, suggesting a rural or farm setting.

Questions?